

# Quick Installation

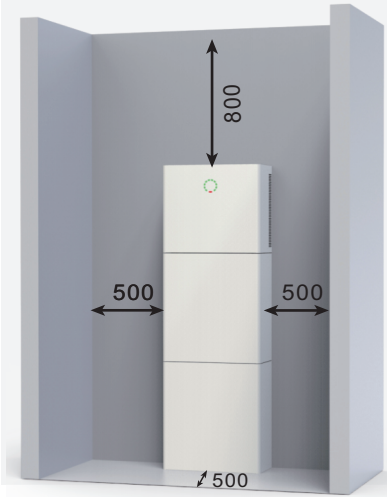
V1.0



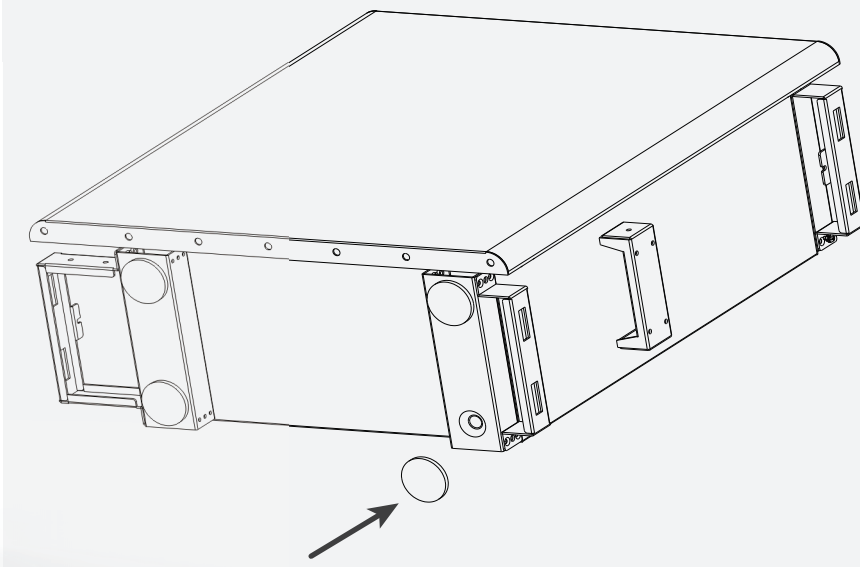
Note: Please read the Agave user manual carefully before installation.

## A Installation Space

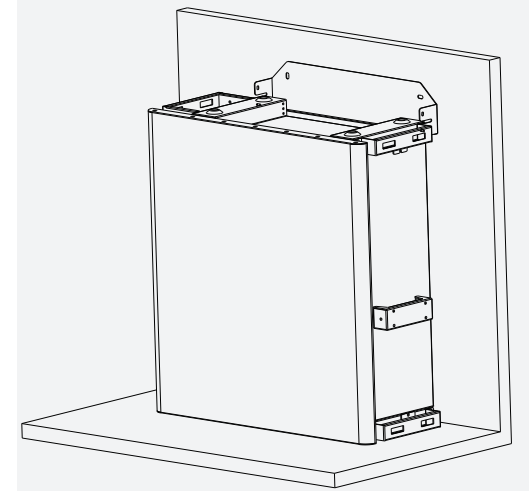
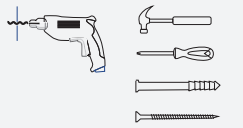
- (1) 500mm beside the SPHA
- (2) 800mm beside the SPHA
- (3) 500mm beside the SPHA



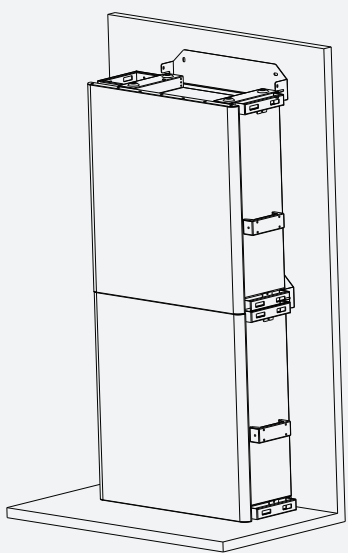
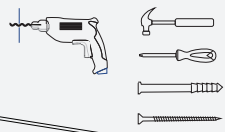
## STEP 1



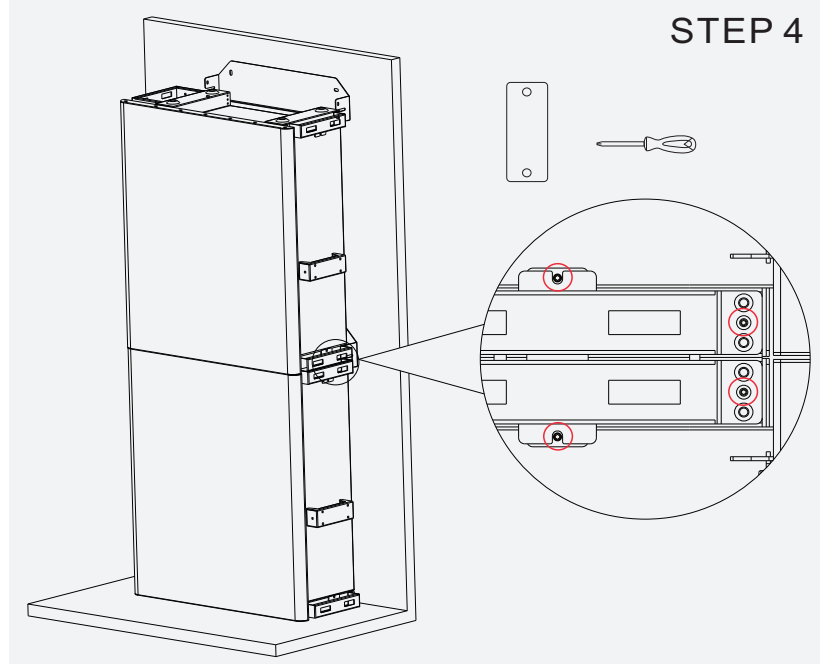
## STEP 2



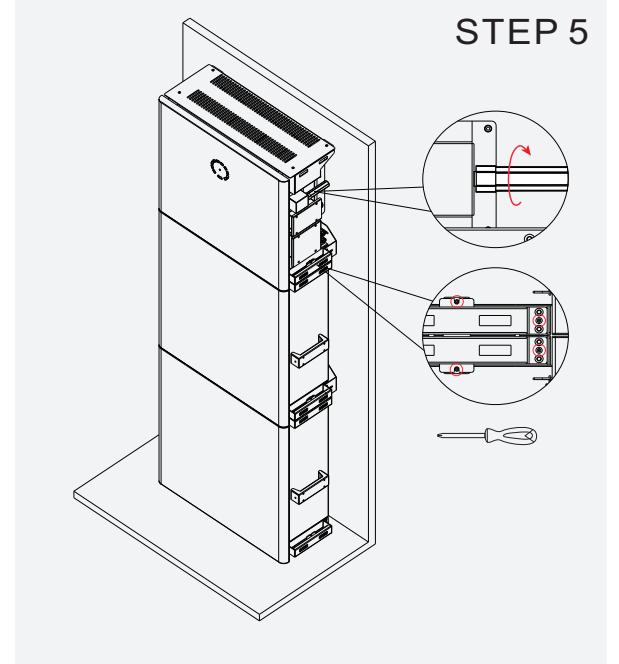
## STEP 3



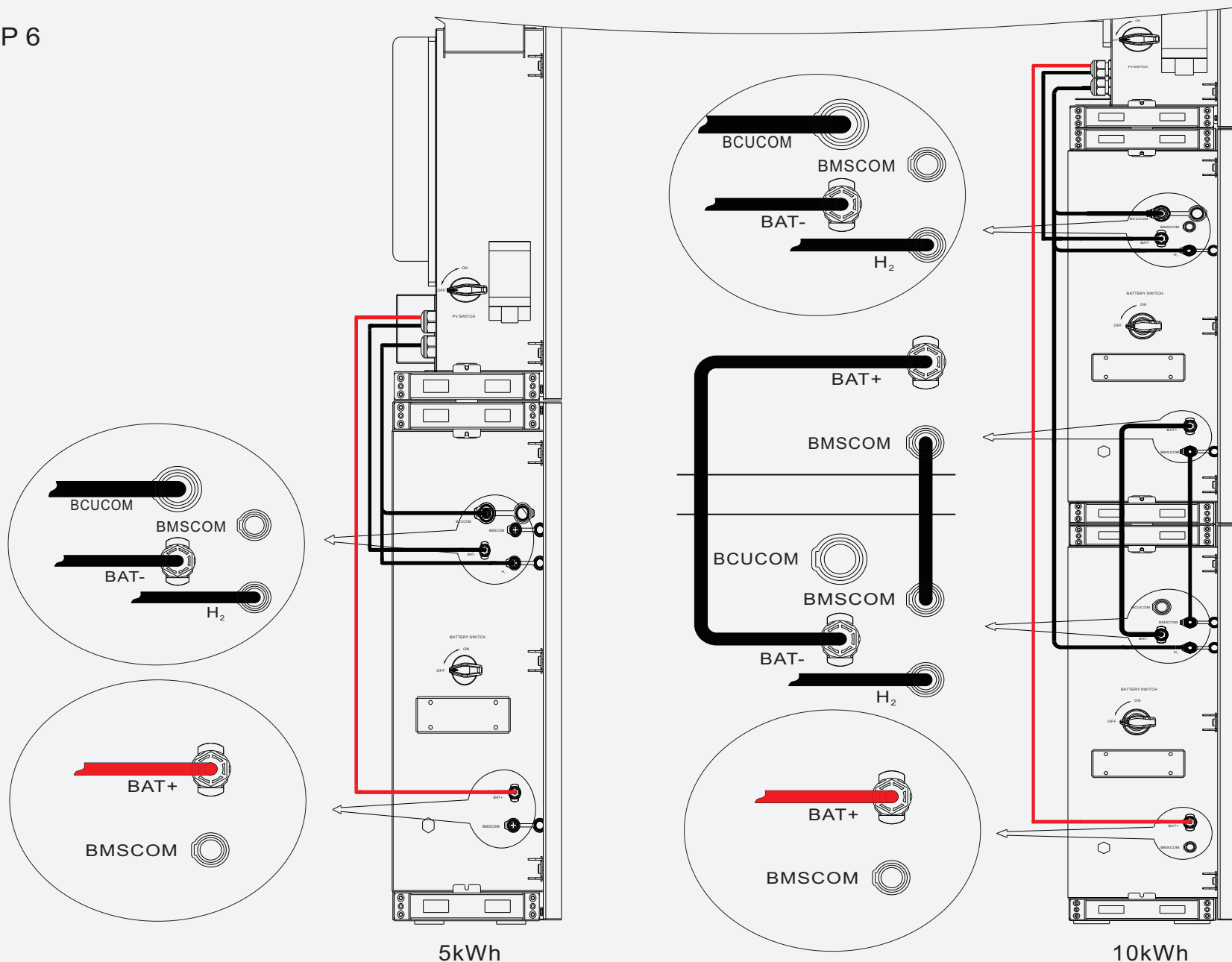
## STEP 4



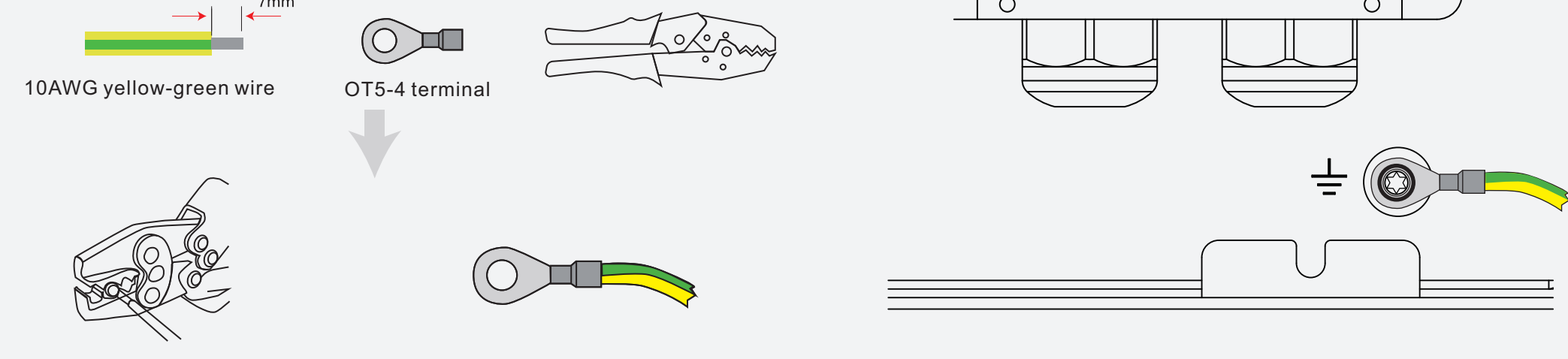
## STEP 5



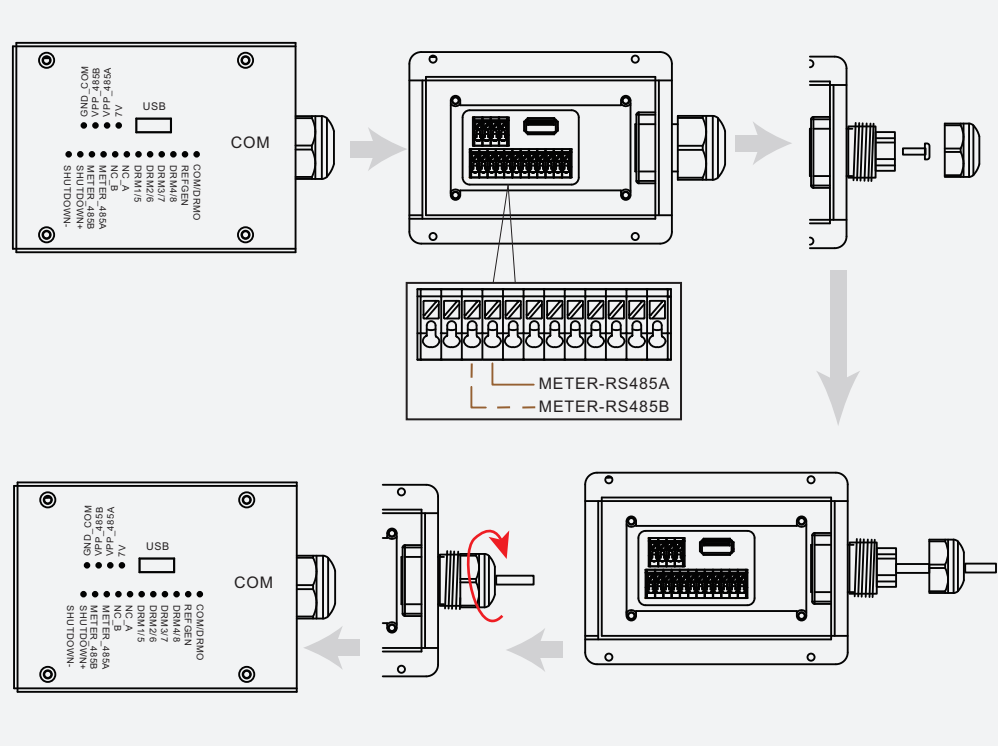
## STEP 6



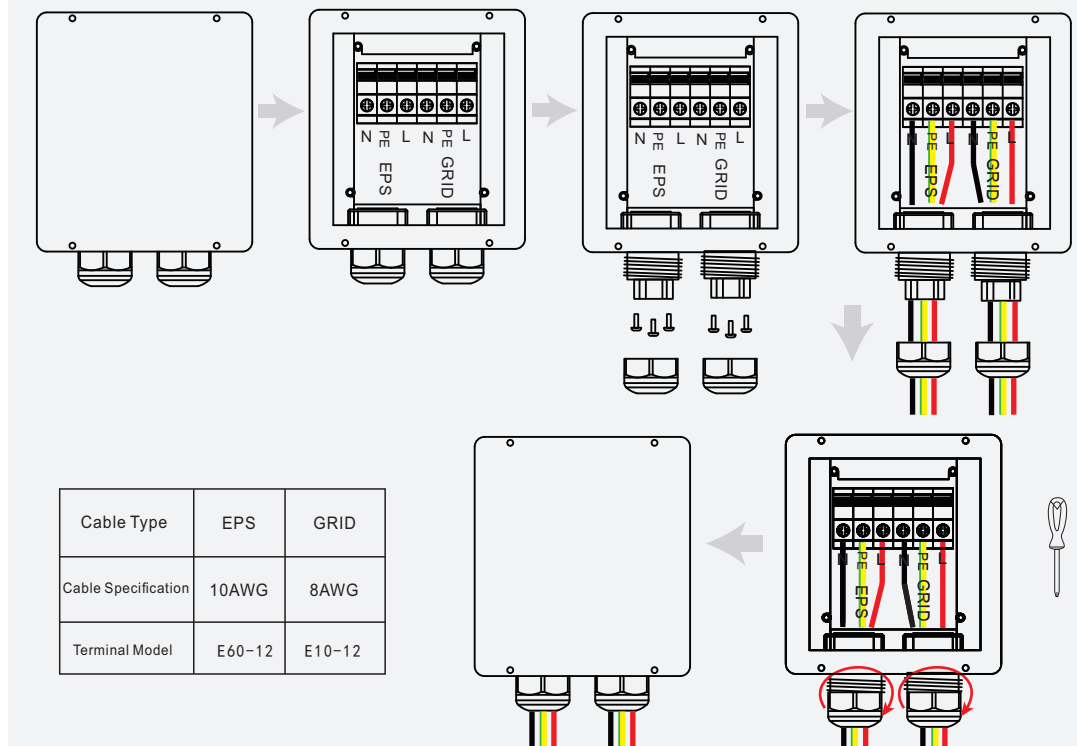
**STEP 7**



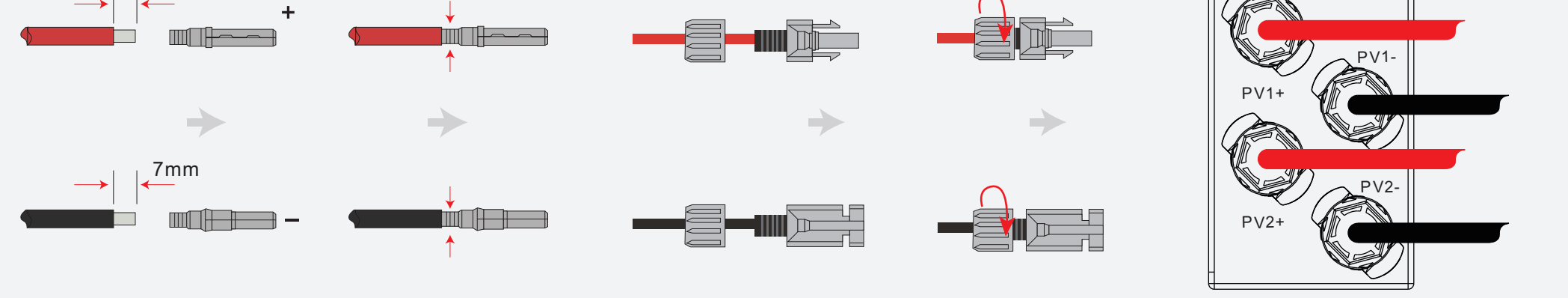
**STEP 8**



**STEP 9**



**STEP 10**



# Quick Installation

V1.0

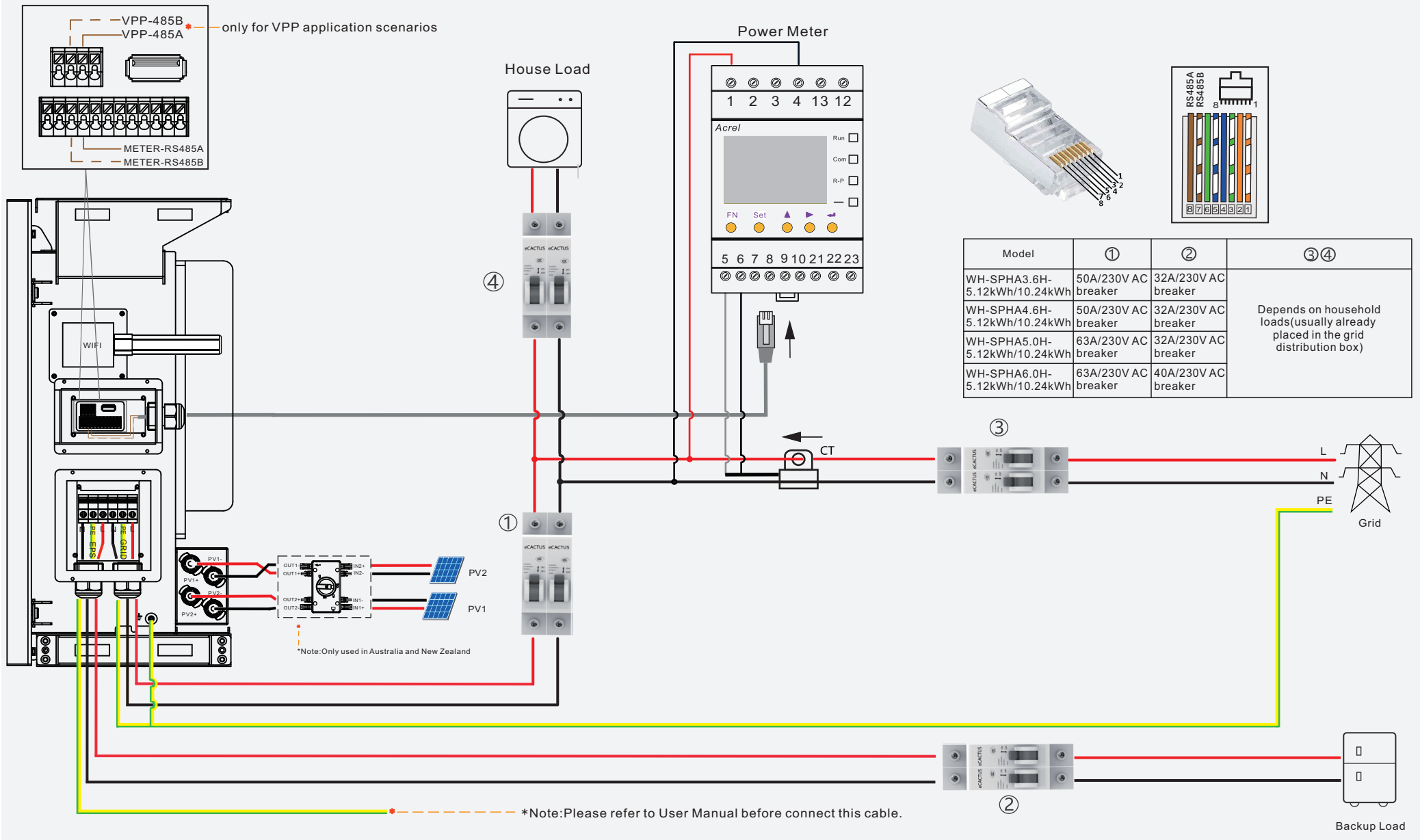


Note: Please read the Agave user manual carefully before installation.

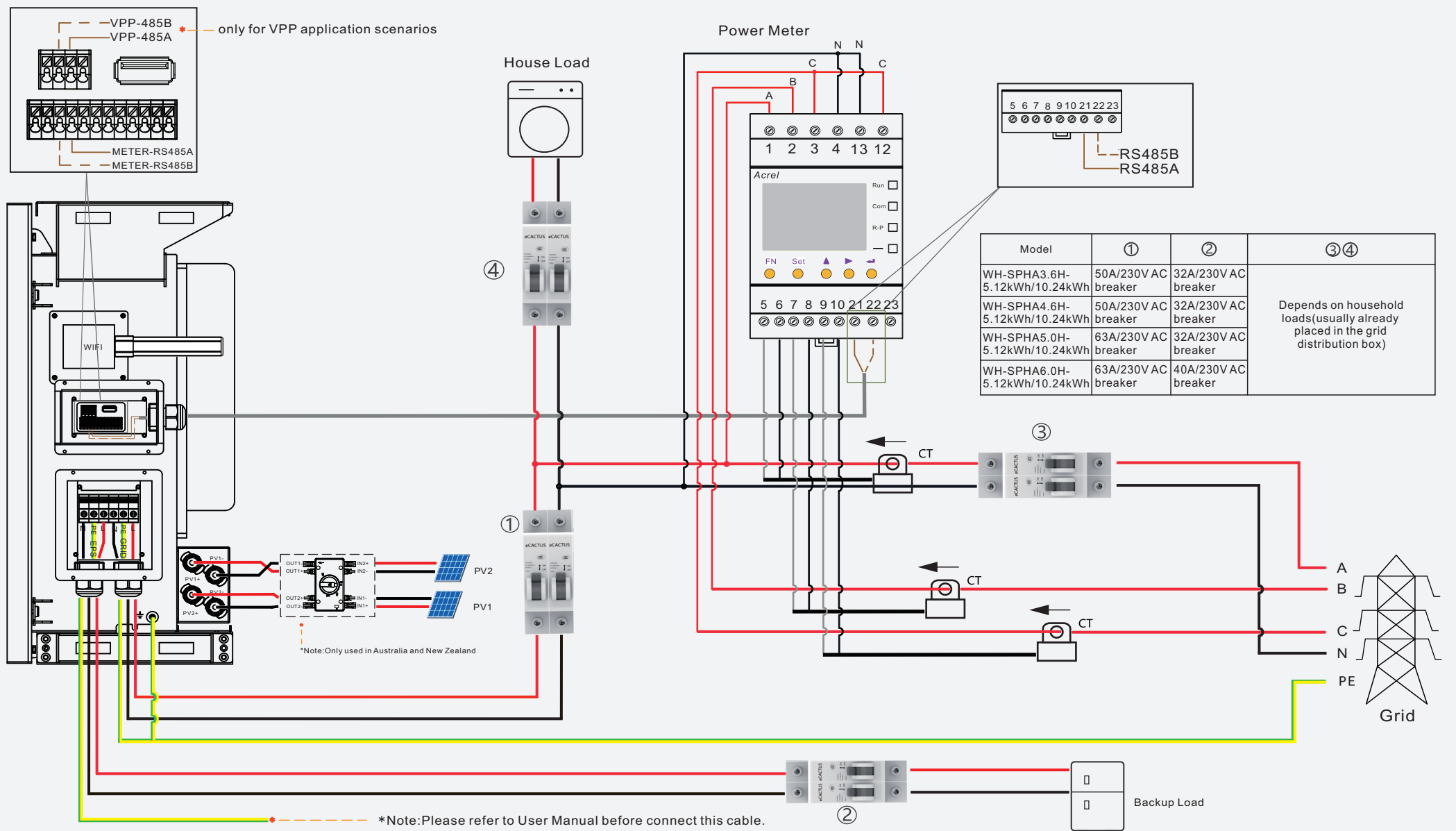
## STEP 11

Please select breaker according to the specification below:

### Single Phase Meter

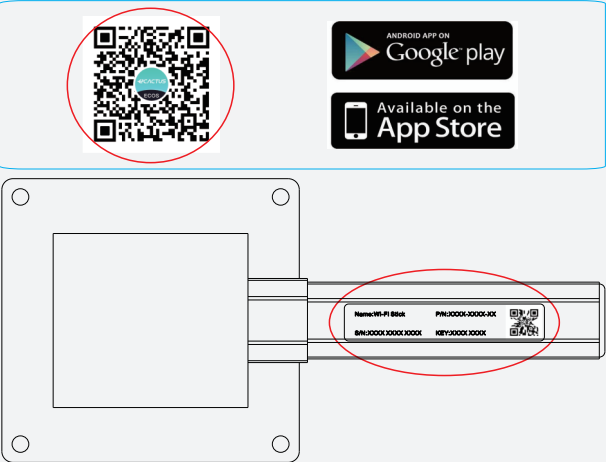
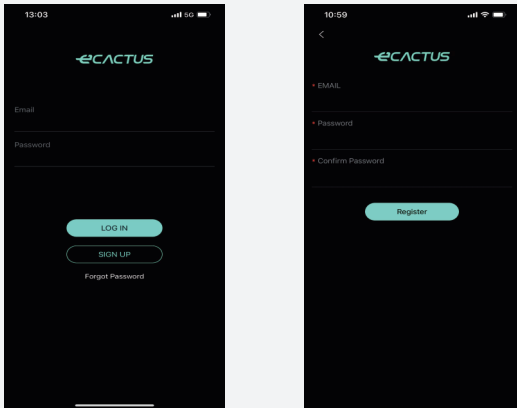


### Three Phase Meter



## STEP 12

1. Inverter must be powered up with only PV power.
2. Need a router with available Internet access to the eCactus application center.
3. An Android or iOS smart phone

<p><b>STEP1</b></p> <p>1. Scan the QR code on the front of the device to install Android or iOS version eCactus App which depends on the operating system.</p>	 <p>The diagram shows the front panel of the inverter. A QR code is located on the top left. To its right are the Google Play and App Store logos. Below these is a Wi-Fi stick. The Wi-Fi stick has a label with the text: 'Name: Wi-Fi-8888', 'PIN: 0000-0000-0000', and '88880000 0000 0000 0000'. A red circle highlights the QR code and the Wi-Fi stick.</p>
<p><b>STEP2</b></p> <p>1. Open ECOS APP and click the sign up button to register a new user account.</p> <p>2. Following all the instructions during the sign up process to successfully connect the device with ECOS.</p> <p>3. The QR code for the product connection ID is on the Wi-Fi stick within the right side of the device.</p>	 <p>The first screenshot shows the eCactus app login screen with fields for Email and Password, and buttons for LOGIN, SIGN UP, and Forget Password. The second screenshot shows the registration screen with fields for EMAIL, Password, and Confirm Password, and a Register button.</p>

### NOTE:

1. Please make sure the password is right the same with the router's.
2. If everything is right well, the Wi-Fi LED on inverter will change from double blink to quartic blink then to solid status, Which means Wi-Fi is connected to eCactus successfully.